

ICT International MCC Mini



Contents

ICT International MCC Mini.....	1
1. MCC Mini Components.....	3
2. MCC Mini Operation	4
2.1 RF Discover.....	5
2.2 RF Test Mode	5
Appendix A: Troubleshooting	6
Contact Details.....	7



1. MCC Mini Components

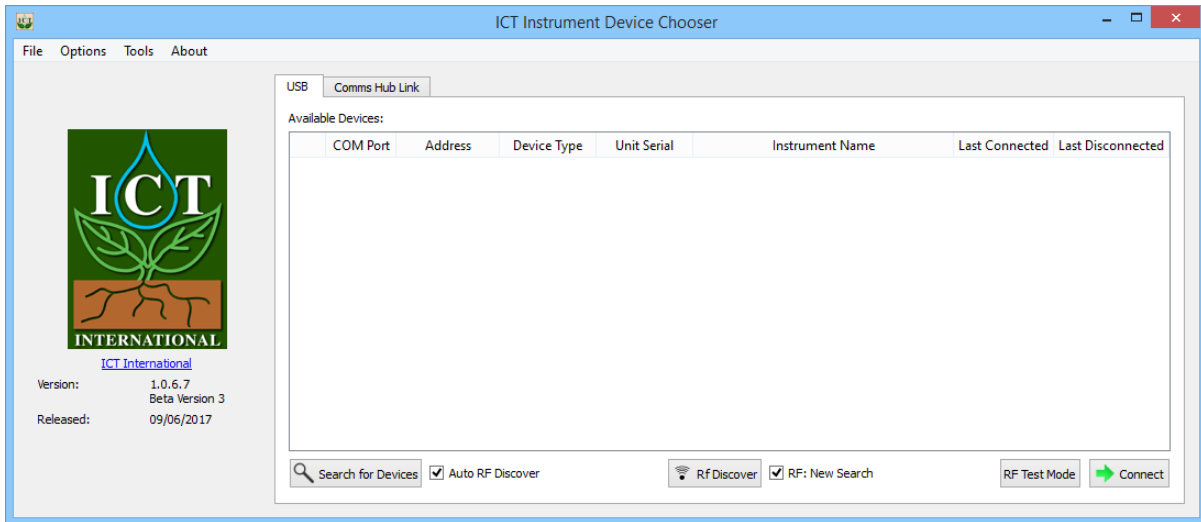


The ICT International MCC Mini includes:

1. Padded transport box
2. Standard USB-A to Mini-B Cable
3. Antenna Adaptor (Required for Directional/Flat Panel antennae, other antennae not included)
4. Standard 2.4GHz Antenna
5. MCC Mini

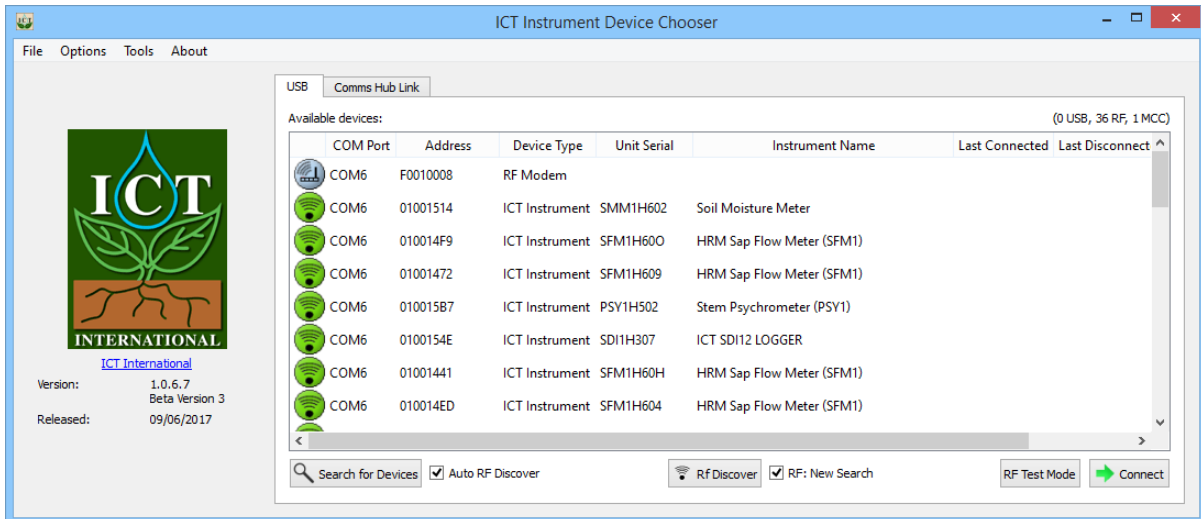
2. MCC Mini Operation

Open ICT Combined Instrument Software¹



Connect the USB cable to the MCC Mini, and plug it into your computer.

Click 'Search for Devices' – the MCC Mini should appear at the top of the list as an RF Modem. If 'Auto RF Discover' is ticked, any ICT Instruments in range will be discovered.



To connect to a listed instrument, you can double click it from the list, or select it and use the 'Connect' button.

¹Note: ICT Combined Instrument Software can be downloaded from:
<http://ictinternational.com/support/software/>

Note: The MCC Mini is plug-and-play on most modern operating systems. If the MCC Mini is not immediately recognised, see Appendix A.

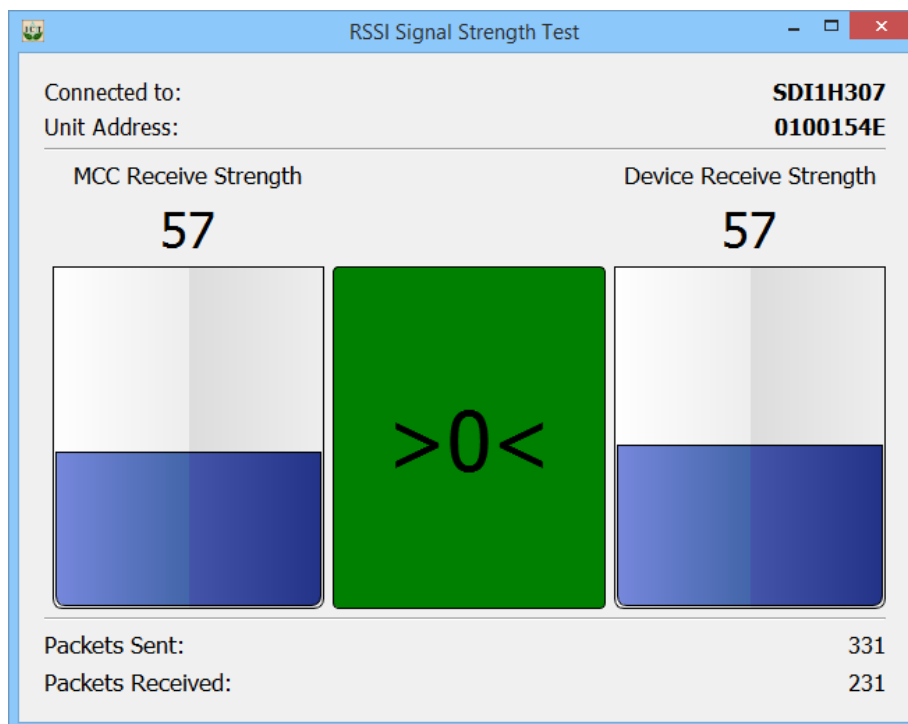
2.1 RF Discover

Once the MCC Mini has been connected and appears on the list, RF Discover can be used to skip USB Instrument Discovery and immediately run a RF scan. This is a more convenient way to search for instruments when going site-to-site in the field.

'RF: New Search' enables discovery of instruments not currently on the list, however the search for instruments will take longer.

2.2 RF Test Mode

The RF Test Mode button toggles RF Testing. If enabled, attempting to connect to an instrument will begin an RSSI Signal Strength Test.



In order for a connection to the instrument to be established, the difference (middle column, >0< in this screenshot) should be no more than 10.

This feature can be used for site surveys, and is ideal for picking locations to install Telemetry Hubs for remote data collection.

For more information on site surveys, contact ICT International: sales@ictinternational.com.au

Appendix A: Troubleshooting

The MCC Mini does not appear in the list of available devices.

You may require a driver for the MCC Mini, this is available from:

<http://ictupdater.ictinternational.com/sw/usbuart.zip>

This driver requires manual installation:

Method one:

1. Extract the zip file
2. Right click the extracted .inf file, install.

Method 2:

1. Extract the zip file
2. Plug in the MCC Mini
3. Open Device Manager
4. Find the MCC Mini (In Ports – Cypress Uart)
5. Right click -> Uninstall, tick Uninstall Driver.
6. Scan for Hardware Changes
7. Right click the MCC Mini (Unknown device or Cypress) – Update Driver Software
8. Browse for Driver Software – select the extracted file.

After this, unplug the MCC Mini, Open ICT Combined Instrument Software, then plug the MCC Mini back in.

If the MCC Mini is still not found after searching for devices, contact ICT International for assistance:

sales@ictinternational.com.au

Contact Details



ICT International Pty Ltd.

Enabling better global research outcomes in soil, plant & environmental monitoring.

www.ictinternational.com

sales@ictinternational.com.au

Phone: 61 2 6772 6770

Fax: 61 2 6772 7616

PO Box 503, Armidale, NSW, Australia, 2350.

