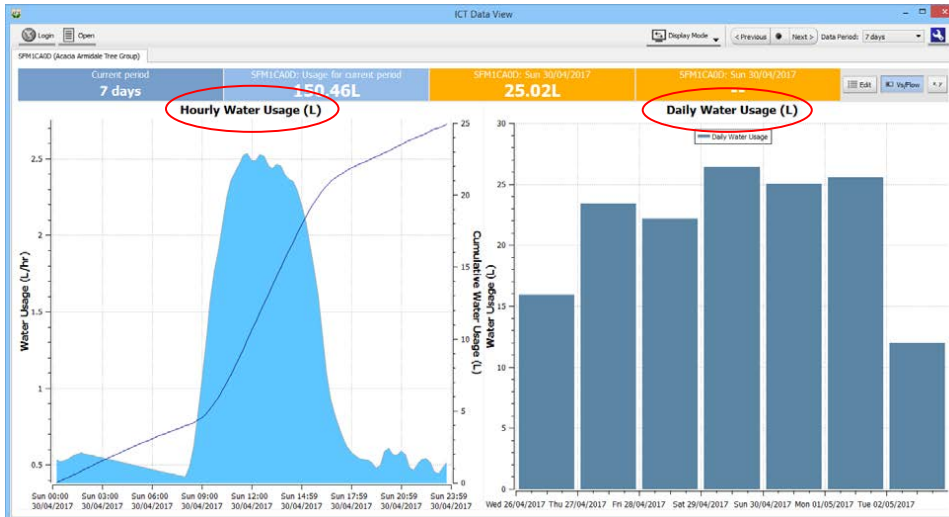


ICT Combined Instrument Software

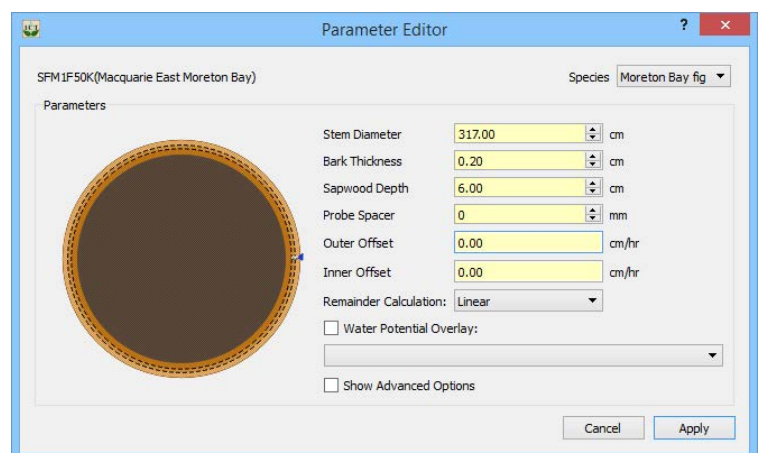
In the latest version of ICT International's Combined Instrument Software/Dataview, the Sap Flow Meter Water Usage Display Mode has been re-engineered to allow for display of offline data files.

SFM Water Usage Display Mode

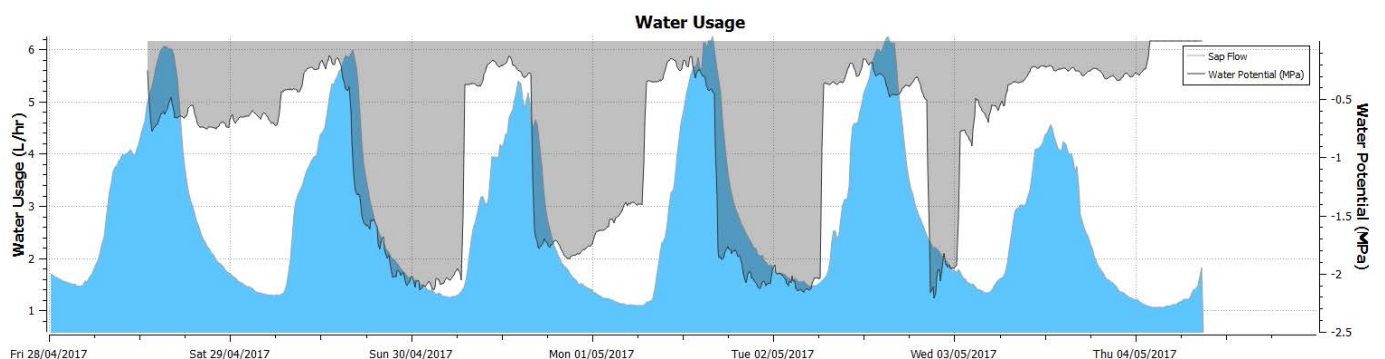


SFM Water Usage Display mode is a powerful decision making resource, displaying Hourly Water Usage and Daily Water Usage in Litres, as well as Cumulative Usage, with display options for Raw Sap Velocity. This can be for 7, 14, 30 day or user selected intervals. This enables trends in water use to be displayed. Eg: Seasonal, Drought Stress or Irrigation outcomes.

Using the SFM Water Usage features, you can set the parameters of the tree being measured to calculate whole-tree water usage, and you can also calculate **water usage** for a whole field of trees!



The new Psychrometer Data Overlay (grey) allows for evaluation of Sap Flow Data against stem or leaf water potential as measured by the PSY1 Psychrometer. To overlay Psychrometer Data, use Parameter Editor to select the Psychrometer under Water Potential Overlay.



ICT Combined Instrument Software



*Enabling better global research outcomes in soil,
plant & environmental monitoring.*

HOME PRODUCTS ▾ APPLICATIONS CASE STUDIES SUPPORT ▾

HOME » SUPPORT » SOFTWARE

Software

ICT Combined Instrument Software
Version: 1.0.6.5

Release: 13/02/2017 – Release Notes
Download (Windows) (12.9 MB)
Download (Mac) (16.7 MB)

ICT Combined Instrument Software
Beta Version: 1.0.6.6

Download (Windows) (13.2 MB)

This new version (1.0.6.6) is available from:
<http://ictinternational.com/support/software/>



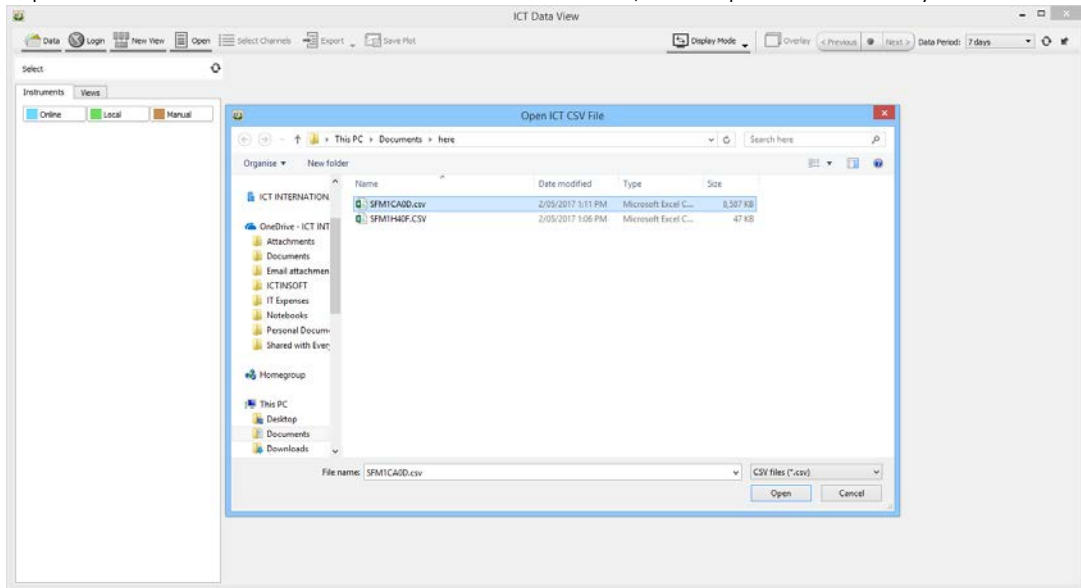
Enabling better global research outcomes in soil, plant & environmental monitoring.
www.ictinternational.com : sales@ictinternational.com.au : +612 6772 6770

INTERNATIONAL

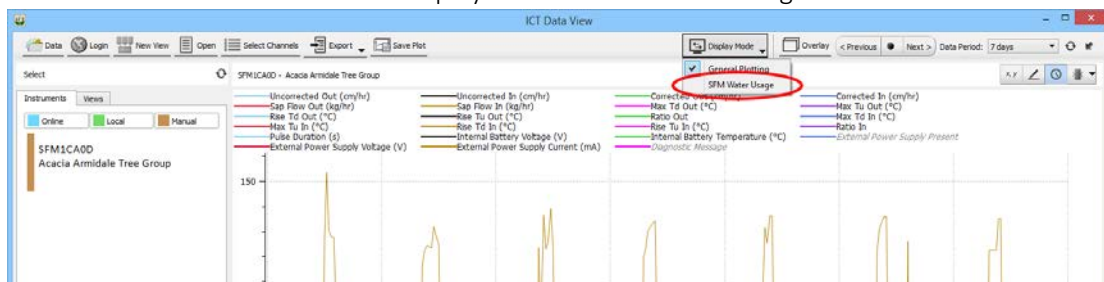
ICT Combined Instrument Software

Quick tips for opening offline data in SFM Water Usage View:

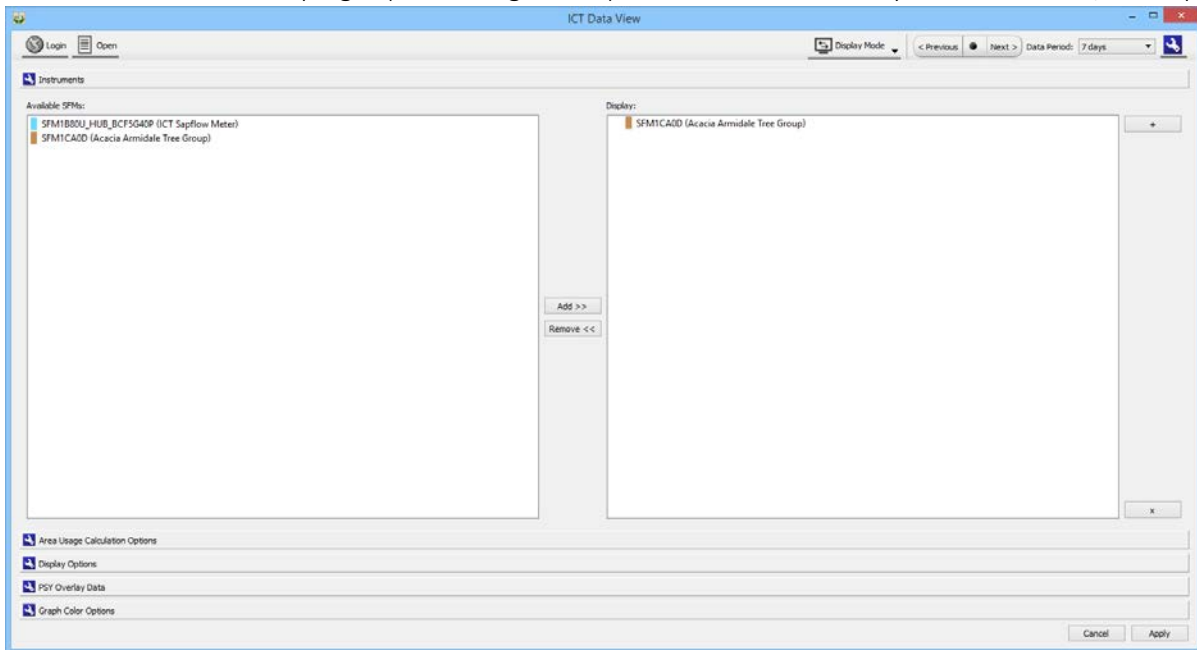
1. Open Dataview from Combined Instrument Software, then Open the CSV file you want to view:



2. Switch Display mode to SFM Water Usage:



3. Click the wrench in the top right (Edit Configuration) and Add the SFM data you want to view, then apply.



4. If no data is shown, check the date period covers the Data.

